



Ke Kulturnímu domu 14  
163 00 Praha 6 – Řepy



# INVITATION

## UCI King of Prague C1

### Prague (CZ) - 20 & 21 June 2015

**King**   
of Prague  
UCI international Race class C1  
19.-21.6.2015  
prize money  
**9.000 €**  
**Mitas**  
Designed for you

**FREE ENTRY**

**ŘEPY** 



## WELCOME

We are very proud to welcome all the athletes, teams, officials and spectators at the BMX track in Prague – Řepy, Czech Republic. We are biggest cycling club in Czech republic with more than 170 members with 100 licenced rider from BMX, DH, XC, Track. Our track hosted 2012 and 2014 Czech national Championship. The track was rebuilt in 2011 by Lukáš Tamme. The track has Traditional starting hill with ProGate system and one Pro Section in the second straight. Track is with tarmac turns and starting hill, all straight from limestone. Track is according newest UCI rules 8m first straight and first turn and rest straight and turns 6m. Track is 400 meters and is very fast with time 32,5s.

## PICTURE OF VENUE

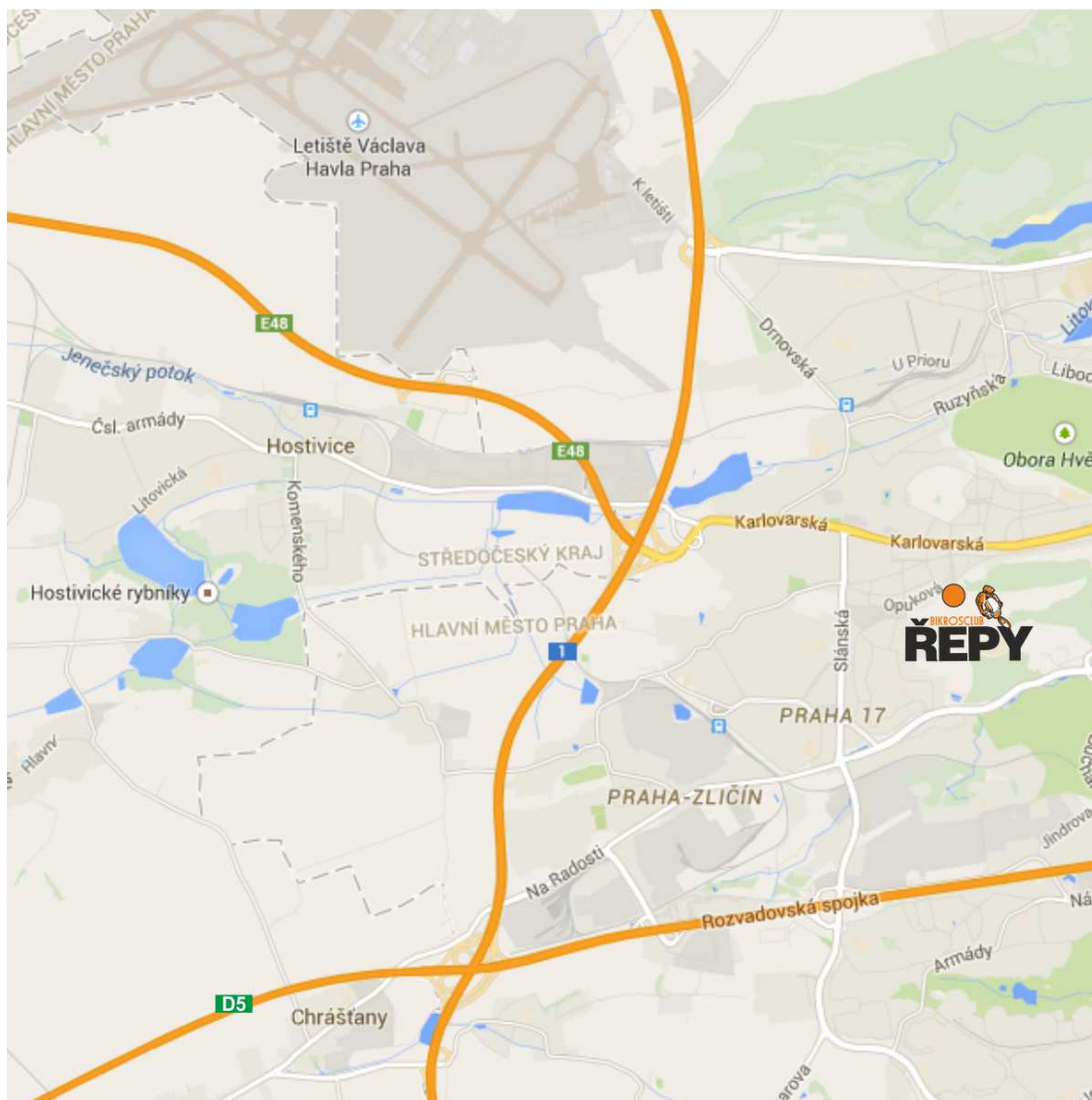


Our track is located in west side of Prague, only 5 km from Václav Havel Airport. 3km from nearest hospital FN Motol and 5min from highway E50/D5 or E48

Bikrosclub Řepy  
Ke kulturnímu domu 439/14  
Prague – 163 00  
Czech Republic

## GPS:

50°04'20.8"N  
14°19'13.1"E



## CLASSES

- Championship Classes:
- Women Junior / Men Junior (Saturday and Sunday)
- Women Elite / Men Elite (Saturday and Sunday)
- Challenge classes\*:
- Boys a Girls 6 & 7/8, 9/10, 11/12, 13/14, 15/16 (Saturday and Sunday)
- Cruisers 16 and under, 17/29, 30/39, 40 - and over (Saturday and Sunday)
- Men 17+ (Saturday and Sunday)

**\*Click pedals are only allowed for classes Boys and Girls 13 years and over**

## REGISTRATION FEE

- Challenge Classes € 10 / 300Kč
- Junior Women, Junior Men: € 35 / 1000Kč
- Elite Women, Elite Men: € 50 / 1400Kč



Ke Kulturnímu domu 14  
163 00 Praha 6 – Řepy

## **PRE-REGISTRATION**

All riders have to pre-register through their own federation:

Every federation will send this Registration sheet to [tamme@bikrosclubrepy.cz](mailto:tamme@bikrosclubrepy.cz) by the following deadline:

**Deadline for pre-registration: Wednesday June 10th**

Federations and Teams should register the riders with their international plate number. In the case of conflicting plate numbers in a category the UEC plate number will be used, otherwise a plate number will be provided by the jury/administration. All riders have to have a side-number plate.

Federations and Teams have to pay for registrations by bank transfer to the bank account:

### **Bikrosclub Řepy**

Bank: Komerční Banka

IBAN CZ1301000000271577150227

BIC / SWIFT kód KOMBCZPPXXX

Comment: "King of Prague"

### **Later registration after deadline is possible also at date of race**

Registration fee will be in cash:

- Challenge Classes € 10 / 300Kč
- Junior Women, Junior Men: € 50 / 1400Kč
- Elite Women, Elite Men: € 75 / 2100Kč

## **REGISTRATION CONTROL**

Every rider has to come to the registration control at the organization on race day. Registration of riders will be done by the chef d'équipe location as pointed out at the track.

Registration times:

Friday 15:00 – 20:00 hrs

Saturday 08:00 - 9:00 hrs

Sunday 08:00 - 08:30 hrs

## **PRIZES AND AWARDS**

- For Challenge classes Boys and Girls 6 - till 15/16:  
Trophies for 8 finalists of each category per race.
- For Challenge classes Cruisers / Men 17+:  
Trophies for 3 finalists of each category per race.
- For Championship classes:  
Prize money as listed below per race, according to the UCI C1 schedule:





Ke Kulturnímu domu 14  
163 00 Praha 6 – Repy

	ELITE MEN	ELITE WOMEN	JUNIOR MEN	JUNIOR WOMEN
PLACE	€	€	€	€
1	800	450	350	200
2	400	200	175	100
3	200	150	125	75
4	175	100	75	65
5	150	75	50	45
6	125	50	40	30
7	100	40	30	20
8	75	25	20	10

Price giving ceremony after all finals next to starting hill

### TEAM AREA

Behind the starting hill and next to the track there will be a team area for team tents and it will be free of charge. You can also rent tents 3x3m with chairs, it will cost 100€. For rent tents reservations can be made by sending an email to: [tamme@bikrosclubrepy.cz](mailto:tamme@bikrosclubrepy.cz) and payment will be on same account as registration fee

### CAMPING

Next to the track there will be a small campsite and parking lot. No showers and electricity, only toilet facility. There will not be a guard during the night.

Costs for 2 nights € 10,00 / 300Kč per caravan/mobile home/tent

Campsite will be open on Friday June 19th 2015 from 2pm until Sunday June 21st two hours after race ending.

### ENTRANCE

- For free

### FOOD AND DRINKS

A variation of food and drinks can be found next to the track.

### ACCOMMODATION

- **Hotel Energie**  
Plzeňská 276/298 , Prague, 150 00, Czech Republic
- **Hotel Golf**  
Plzeňská 103/215a, Prague, 15000, Czech Republic
- **Pension Wertheim**  
Karlovarská 51 - Bílá Hora, Praha 6
- **Hotel U Hvězdy**  
Bělohorská 151/259, Praha 6
- **Hotel Fortuna West**  
Mrkvičková 2, Prague, 163 00, Česká republika



## INFO MAP

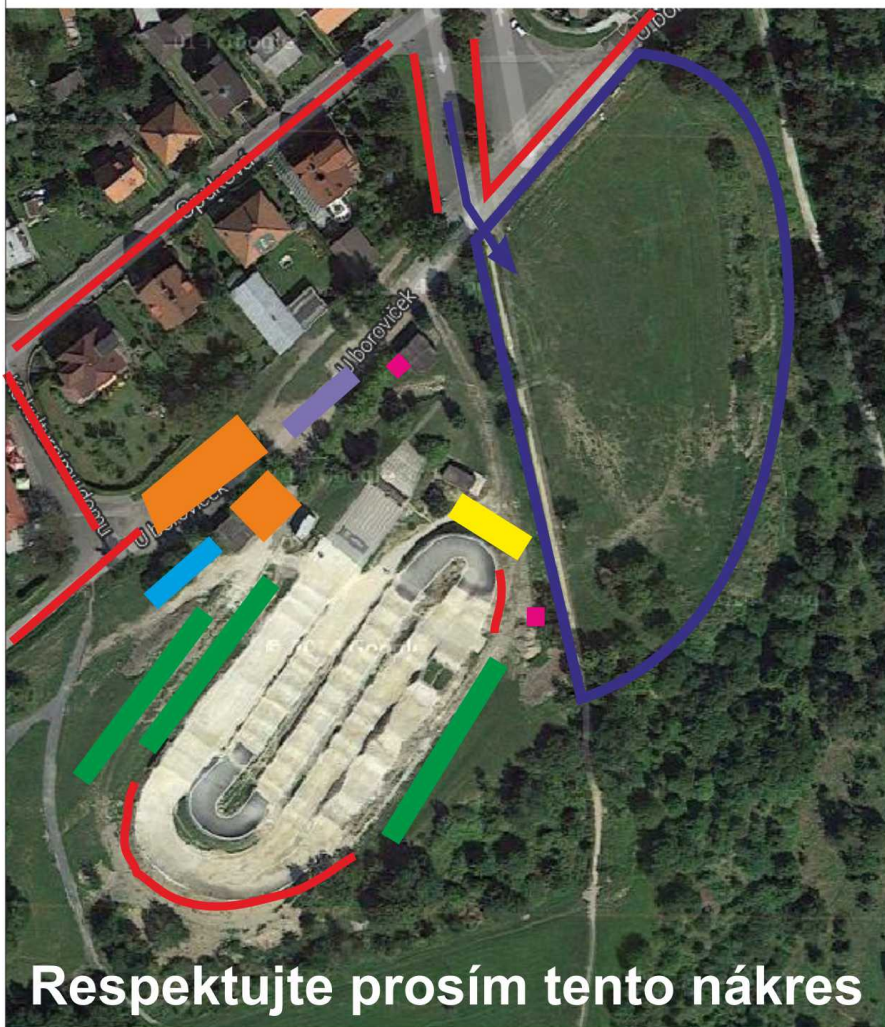
**Kemp / parkoviště / vjezd**

**Zakázané zóny/zákaz parkování**

**Týmové stany, prostor pro diváky**

**Zázemí BMX Řepy**

**Občerstvení, prodejci, WC, montovaná tribuna**



**Respektujte prosím tento nákres**

1. Track – grey layout
2. Team area – yellow and green
3. Grandstands (if applicable) - green
4. VIP (if applicable) - yellow
5. Parking – light blue and streets
6. Home team area - orange
7. Shops – light blue
8. Medical service – red cross
9. Toilet – pink
10. Refreshment – light violet
11. Prohibited place – red
12. Race office, registration – black house next to grandstands



Ke Kulturnímu domu 14  
163 00 Praha 6 – Řepy

## TIME SCHEDULE

### Friday - 19.6.2015

- 15:00 - 20:00 - Registration control by country/national chef d'Equipe only
- 16:30 - Chef d'Equipe meeting
- 16:00 - 16:55 - Training 20" & 24" challenge (Bloc 1: 24" + boys & girls 6 & - 11/12)
- 17:00 - 17:55 - Training 20" & 24" challenge (Bloc 2: 24" + boys & girls 13 and older)
- 18:00 - 18:40 - Gate practice Championship classes (Bloc 3: Junior + Elite Women)
- 18:45 - 20:00 - Gate practice Championship classes (Bloc 3: Junior Men, Elite Men)

### Saturday - 20.6.2015

- 08:00 - 09:00 - Registration control by administration
- 09:00 - 09:30 - Warm up / Gate practice bloc 1 (24" + boys & girls 8 & - 11/12)
- 09:30 - 10:00 - Warm up / Gate practice bloc 2 (24" + boys & girls 13 and older)
- 10:00 - 10:30 - Warm up / Gate practice bloc 3 (Junior Women, Elite Women)
- 10:30 - 11:10 - Warm up / Gate practice bloc 3 (Junior Men, Elite Men)
- 11:30 - Motos 1-3 blocs 1,2,3
- All finals blocs 1,2,3
- Award ceremony for all classes blocs 1,2,3

### Sunday 21.6.2015

- 08:00 - 08:30 - Registration control by administration
- 08:00 - 08:30 - Warm up / Gate practice bloc 1 (24" + boys & girls 6 & - 11/12)
- 08:30 - 09:00 - Warm up / Gate practice bloc 2 (24" + boys & girls 13 and older)
- 09:00 - 09:30 - Warm up / Gate practice bloc 3 (Junior Women, Elite Women)
- 09:30 - 10:10 - Warm up / Gate practice bloc 3 (Junior Men, Elite Men)
- 10:30 - Motos 1-3 blocs 1,2,3
- All finals blocs 1,2,3
- Award ceremony for all classes blocs 1,2,3

### Time schedule can be changed

## CONTACT INFORMATION

Organizer Bikrosclub Řepy  
Ke kulturnímu domu 439/14, Prague – 163 00, Czech republic  
Tel: +420 777 11 38 86 Email: [tamme@bikrosclubrepy.cz](mailto:tamme@bikrosclubrepy.cz)  
Website: [www.bikrosclubrepy.cz](http://www.bikrosclubrepy.cz)

