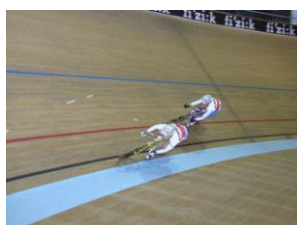


TRAINING CAMPS AT THE WORLD CYCLING CENTRE FOR NATIONAL CYCLING FEDERATIONS

Training camps

Special prices for National Cycling Federations

Let your athletes profit from the excellent facilities at the World Cycling Centre, where a lot of international level athletes are already training !



Price : CHF 110.- per day and per person (price in Euros at the daily exchange rate)

This price includes :

- accommodation at the « Mon Séjour » resort in the city-center of Aigle, 2 km from the WCC, in rooms from 2 to 8 beds (rooms with wash-hand basin / shower and WC on the floor). Each person should have his/her own personal effects (towels, etc...). The breakfast is taken there.
- lunch and dinner at the WCC Restaurant « Le Vélodrome »
- use of the 200m Velodrome track
- use of the BMX track with starting gates
- use of the weight training room
- lockers and boxes for bikes
- inside BMX starting gate in case of bad weather conditions

This price does not include :

- transport to Aigle
- transfer from the airport
- transport between the WCC and the accommodation centre
- insurance cover
- technical support
- material (bike, etc...)

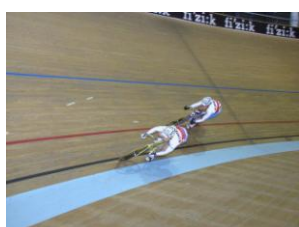
Other training possibilities :

- Cyclo-cross course around the WCC (stairs, planks, sand area) and its surroundings
- Many road courses (plains, mountain passes, etc.) close by
- Many MTB courses in the surrounding ski resorts (cross-country and downhill)

Other leisure activities in the region : thermal pools, etc.

TRAINING CAMPS AT THE WORLD CYCLING CENTRE FOR NATIONAL CYCLING FEDERATIONS

Ancillary services proposed only to the National Federations upon reservation and depending on availability



- Transport by minibus, Geneva airport – WCC and / or WCC – Geneva airport
Depending on availability of WCC minibus and driver (limited places in minibuses)
CHF 350.- each way inclusive driver
- WCC minibus rental
CHF 200.- per day
- UCI car rental
CHF 70.- per day
- Road, track, MTB and BMX bike rental
CHF 20.- per day and per bike
City-bike rental
CHF 15.- per day and per bike
- Mechanical assistance (according to use)
CHF 100.- per day
- Scooter rental for track
CHF 40.- per day
- Locker rental (in the corridor, with padlock)
CHF 3.- per day and per locker
- Massages
According to availability of external masseur, on-the-spot cash payment

THESE ANCILLARY SERVICES ARE PROPOSED ONLY UPON PRIOR REQUEST WHEN BOOKING TRAINING CAMP AND DEPENDING ON AVAILABILITY OF PERSONNEL, VEHICLES, ETC.

Training camps' booking and cancellation conditions

For all the training camps costing a total of up to CHF 3'000.-, a deposit of 50 % of the total is requested. This deposit must be paid within 30 days of confirmation of the reservation, or within 10 days if the training camp is to start sooner.

In the event of cancellation of a confirmed training camp, the WCC retains 10 % of the total amount.