

INVITATION TO  
"BMX GRAND PRIX LATVIA"  
ROUND 1 AT VENTSPILS



LATVIAN CYCLING FEDERATION HAS THE PROUD TO INVITE ON UCI  
5<sup>TH</sup> CATEGORY INTERNATIONAL 6 ROUND TOURNAMENT  
"BMX GRAND PRIX LATVIA". ROUNDS WILL BE HELD AT DIFFERENT  
PLACES OF LATVIA.

[WWW.BMXGRANDPRIX.COM](http://WWW.BMXGRANDPRIX.COM)

## Latvian Cycling Federation. BMX Grand Prix Latvia, Round 1 Invitation



### CALENDAR

„BMX Grand Prix Latvia” rounds will be held on following dates and places:

- **Round 1** – **May 15, Ventspils**, (Saules iela 141, Ventspils, LV-3601);
- **Round 2** – June 12, Madona district;
- **Round 3** – July 17, Burtnieku district, near **Valmiera**;
- **Round 4** – August 7, - Saldus;
- **Round 5** – August 28, Smiltenes district, Silva;
- **Round 6** – September 25, Riga, Mezaparks.

*There is an option to apply for all rounds. All rounds are equal and will be counted in overall ranking.*

**Locations map of all rounds observable here:**

<http://maps.google.com/maps/ms?ie=UTF8&hl=lv&msa=0&msid=215887759087536744049.00049ca8014ee21cbc8d5&z=8>

## Latvian Cycling Federation. BMX Grand Prix Latvia, Round 1 Invitation

### GENERAL INFORMATION

Contacts:	<b>Latvian Cycling Federation</b> Grostonas 6a, Riga, LV-1013, Latvia
For registration and questions:	e-mail: <a href="mailto:entry@bmxgrandprix.com">entry@bmxgrandprix.com</a>
Iveta Gutmane (General Secretary):	Tel. (+371)29288517 e-mail: <a href="mailto:iveta@lrf.lv">iveta@lrf.lv</a>
Miks Pukitis (BMX Coordinator):	Tel. (+371)29118558 e-mail: <a href="mailto:bmx.menedzeris@inbox.lv">bmx.menedzeris@inbox.lv</a>
Janis Grinvalds (Public Relations):	Tel. (+371)26499454 e-mail: <a href="mailto:prese@lrf.lv">prese@lrf.lv</a>
WEB site:	<a href="http://www.bmxgrandprix.com">www.bmxgrandprix.com</a>
Date of event:	<b>15 may, 2011</b>
Place of event:	<b>"Piedzīvojumu parks"</b> Saules iela 141, Ventspils, LV-3601
Registration deadline:	<b>30 April, 2011</b>

### CLASES

#### Challenge classes

Year of Birth	Class
<b>2006-2005</b>	B5/6
<b>2004</b>	B7
<b>2003</b>	B8
<b>2002</b>	B9
<b>2001</b>	B10
<b>2000</b>	B11
<b>1999</b>	B12
<b>1998</b>	B13
<b>1997</b>	B14
<b>1996</b>	B15
<b>1995</b>	B16
<b>1994-older</b>	M17+
<b>1998-older</b>	Cruiser13+
<b>2007-2001</b>	G5/10
<b>2000-1997</b>	G11/14
<b>1996-older</b>	G15+

#### Championship classes

Year of Birth	Class
<b>1994-1993</b>	Junior Men
<b>1992-older</b>	Elite Men

### RULES

Competition goes under UCI Rules.

## Latvian Cycling Federation. BMX Grand Prix Latvia, Round 1 Invitation

### REGISTRATION

All registrations with payment or registration fees have to be sent prior to your national BMX office, in order to a coordinated registration and payment from your region. For individual cases, questions send e-mail to [entry@bmxgrandprix.com](mailto:entry@bmxgrandprix.com)

The **deadlines** of registration for each round:

Round	Place	Event date	Deadline
1	Ventspils ("Piedzīvojumu parks")	May 15	April 30
2	Madona ("Smeceres sils")	June 12	May 28
3	Valmiera ("Avoti")	July 17	July 2
4	Saldus	August 7	July 23
5	Smiltene (Silva)	August 28	August 13
6	Riga (Mezaparks)	September 25	September 10

Registration Fee for round(event)

Class	EUR
Challenge classes	€10
Elite Men	€45
Junior Men	€25

### PRIZES

#### PRIZES BY ROUND

All finalists of each class will be awarded at each round. Elite Men and Junior men finalists will be awarded with following money prizes:

Class	1	2	3	4	5	6	7	8
EM	€300	€150	€75	€60	€53	€45	€37	€30
JM	€150	€75	€38	€30	€26	€23	€18	€15

#### PRIZES BY OVERALL

After round 6 in Riga TOP3 Riders of each class will be awarded with "BMX Grand Prix Latvia" Cups.

*To win Latvians in Latvia – It's a Great Achievement!*

## Latvian Cycling Federation. BMX Grand Prix Latvia, Round 1 Invitation

### TIME SCHEDULE

\*Time may change depending on the number of participants and other possible difficulties.

<b>Sunday 15 May</b>	9:30 – 11:00	Registration / Entry
	10:00 – 10:30	Track Practice. Boys 5-12/Girls 5-14
	10:30 – 11:00	Track Practice. 13 and Older
	11:00 – 11:30	Gate practice. Boys 5-12/Girls 5-14
	11:30 – 11:55	Gate Practice. 13 and Older
	11:30	Team manager Meeting
	12:00	Motos 1-3
	*14:00	Semifinals, Finals
	*15:00	Awards Ceremony

### RACES DAY BEFORE

In same weekend of each round of "BMX GP Latvia" on Saturdays will be possibilities to participate in races open for international riders. Entry will be provided before event.

	Date	Title	Place	Registration
Bef. Round 1	May 14	<b>Season Opening</b>	Ventspils	10:30-12:30
Bef. Round 2	Juny 11	<b>Federation Cup</b>	Madona	10:30-12:30
Bef. Round 3	July 16	<b>Federation President Cup</b>	Valmiera	10:30-12:30
Bef. Round 4	August 6	<b>Lemberg's Cup</b>	Ventspils	10:30-12:30
Bef. Round 5	August 27	<b>Baltic Cup, Round 3</b>	Tartu, EST	10:30-12:30
Bef. Round 6	Sept. 24	<b>Riga Cup</b>	Riga	10:30-12:30

### NATIONAL TEAM PITLANE

The National Team Pitlane will be next to BMX Track. At a cost of €50,00 for the weekend, it's possible to put 1 standard push-up tent (3x3m). The National Team Pitlane will be open from 12.00 on Friday the 13th May and is available for all teams.

Payments can also be done by the Team Manager at secretary/registration center of event.

### NATIONAL TEAM MANAGER AND ASISTANTS

**From UCI Rule Book:** Each national federation which registers riders must appoint a single national team manager to represent the interests of all of its riders at the international BMX race. In addition to this national team manager, a number of assistant team managers shall be allowed according to the following scale:

Number of attending riders	Number of permitted assistants
<b>1 - 100</b>	3
<b>101 and over</b>	4
<b>Host nation</b>	5

A national team manager or his nominated assistant is accredited with the right to enter a restricted zone, as granted by the race director, in order to perform his duties.



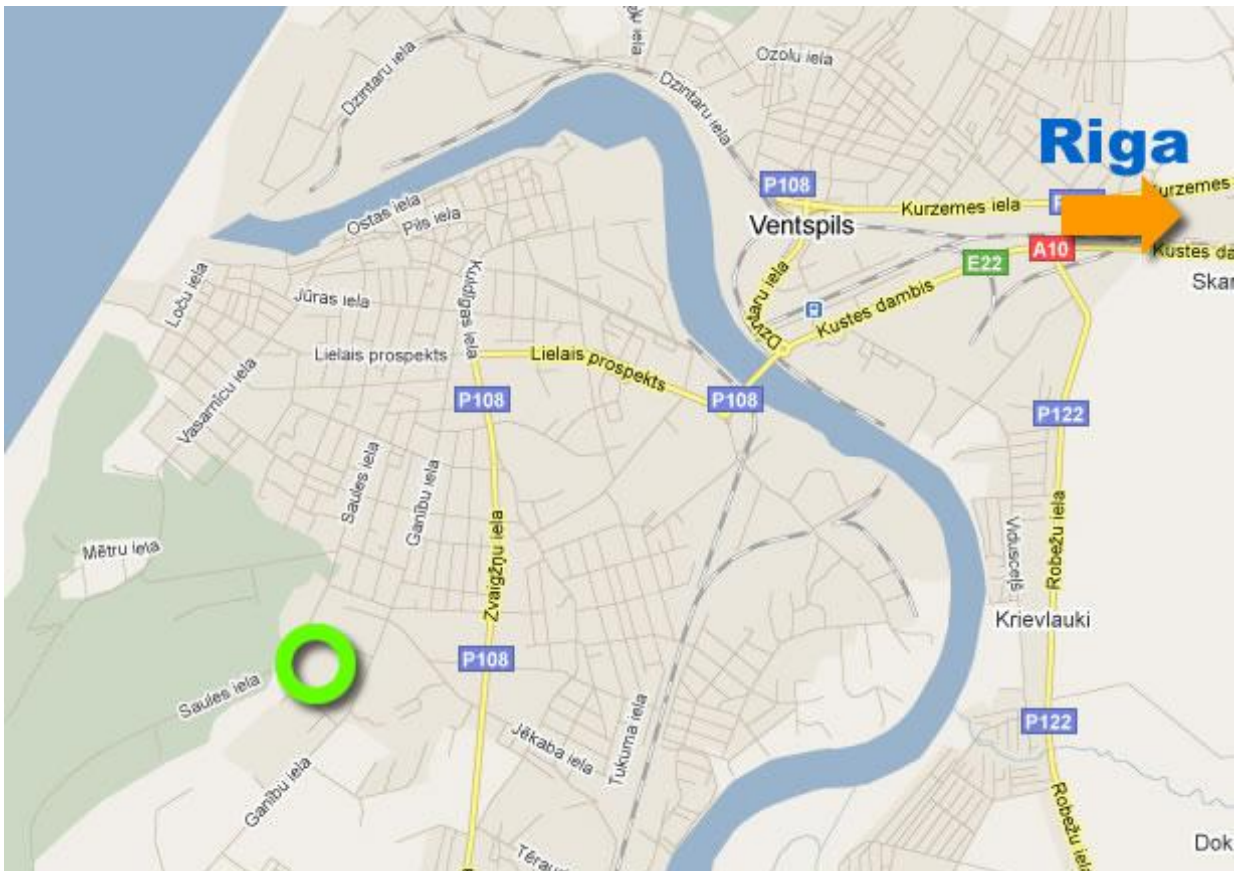
# Latvian Cycling Federation. BMX Grand Prix Latvia, Round 1 Invitation

## LOCATION

Location of Ventspils (Thanks to Google Map!)



**Track Location in Ventspils.** Track located at leisure park "Piedzīvojamu parks". Inside city there are many signs showing You direction to this park.



**Coordinates for navigators:** 57.374748, 21.551206

## Latvian Cycling Federation. BMX Grand Prix Latvia, Round 1 Invitation

### ROUTE

- International Airport: **Riga International Airport**(RIX) with regular flights. Distance to venue: 186km, 2h 32min with car. [Route map.](#) Many well known Car Rent companies available at airport.
- Closest local airport: **Ventspils airport**, available for charter flights for middle size planes(apr.45 passengers). [This airport is just 2km from BMX track.](#) Tel. +371 63624262
- Fairy to Ventspils are going form Stockholm(Sweden) and Travemünde(Germany). More info at <http://www.scandlines.lt>
- Buses from Riga to Ventspils Bus station depart almost every half hour. Buss station is close to Railroad station.

Info about traffic available at [www.1188.lv](http://www.1188.lv) . **1188** is also major Information centre by phone.

### ACCOMMODATION POSSIBILITIES

#### **Tent places behind track for free.**

Leisure complex main building located 200m from track has permanent toilets and showers.

**Other options:** There are many accommodation possibilities inside or around Ventspils. Check out Official Ventspils Tourism site and its page of accommodation!

<http://www.tourism.ventspils.lv/?p=2&lang=eng>

If you have some questions or difficulties to find best deal and place, contact

#### **Ventspils Tourism Bureau:**

Address: 6 Dārza Street, Ventspils, LV 3601

Phone: +371 63622263, 63607664;

Fax: +371 63607665

E-mail: [tourism@ventspils.lv](mailto:tourism@ventspils.lv)

[www.tourism.ventspils.lv](http://www.tourism.ventspils.lv)

### PARKING

Parking for participants, managers, officials, representatives provided next to track for free.

### FOOD

There is café-restaurant behind BMX-track. Ventspils has also other restaurants around.

### PARAMEDICS

A paramedics team will be present at practices and racing.

## Latvian Cycling Federation. BMX Grand Prix Latvia, Round 1 Invitation

### RESPONSIBILITY

Organizer and the city of Ventspils do not bear any responsibility regarding thefts or damages happening on the site, during the race, on the parking lots, on the campground or the „Piedzīvojumu parks” site.

### SUPPORTED BY



LATVIJAS RITĒNBRAUKŠANAS FEDERĀCIJA  
FEDERATION LETTONNE DE CYCLISME  
LATVIAN CYCLING FEDERATION



***MORE INFORMATION ON***

**[www.bmxgrandprix.com](http://www.bmxgrandprix.com)**